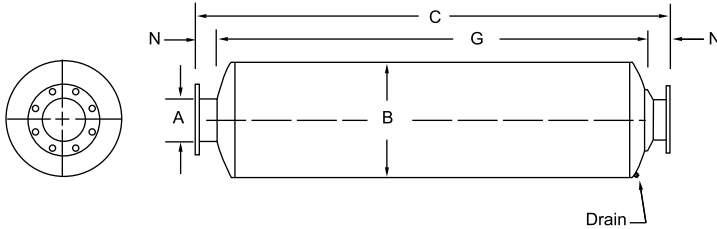


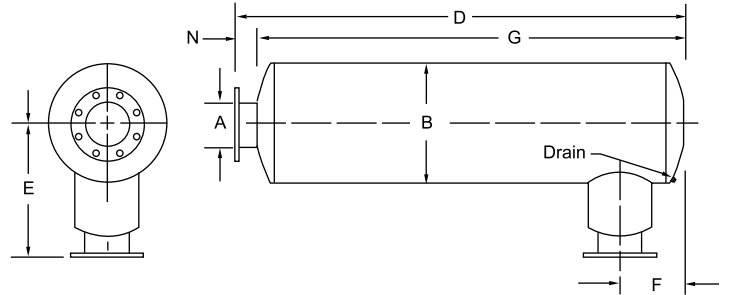
Inlet and Discharge Silencers

Chamber/Packed Silencer KR1 & KR2 Series

KR1



KR2



The BelMar KR series is a two chamber reactive/absorptive (with acoustical packing) silencer designed for positive displacement blowers. This series provides an excellent grade of silencing when used on applications operating at above transition speed (refer to bulletin# BMBB-T1, Table A). Pulsation control is an inherent feature due to the products acoustic design requirements and therefore, if sized properly, provides optimum pressure drop and flow velocity. See Table D for typical capacity and velocity references. Performance data and an additional configuration are shown on the KR4 catalog page.

This series includes an industry premium grade polyester acoustic pack material and barrier screen that is suitable for temperatures up to 325°F. The silencer connection with the acoustic spool should always be connected as close as possible to the blower connection.

A	B	C KR1	G	N	E KR2	F KR2 (min/max)	D KR2	WT
2	6	28.50	22.50	3	8.50	6/6	25.50	17
2.5	8	33	27	3.25	9	7/7	30	32
3	8	39	33	3	10	7/7	36	35
4	10	45	39.50	3	12.50	7.50/16	42.50	60
5	12	57.50	52	2.75	15.50	9/23	55	95
6	14	64	58	3	17	9/25	61.50	140
8	18	72	66	3.50	21.50	12/30	69	240
10	22	85	78	3.50	25.50	13.50/37	82	390
12	26	98	91	3.50	29.50	15/44	95	560
14	30	111	104	3.50	30	16/50	108	810
16	36	113/137*	106/130*	3.50	35.50	18/51,65*	110/134*	1075/1260*
18	42	126/150*	119/143*	3.50	41	20/58,70*	123/147*	1365/1620*
20	42	140/176*	131/167*	4.50	47	22/63,87*	136/172*	1520/1915*
22	48	153/195*	144/186*	4.50	47	23/69,93*	149/191*	2125/2720*
24	54/48*	167/213*	158/204*	4.50	54/55*	25/75,110*	163/209*	2715/3040*

- 2 inch to 5 inch connection sizes are standard with MNPT, 6 inch and up are 150 # ANSI drilled plate flanges
- 4 inch and 5 inch are optional with MNPT or plate flanges
- Dimensions are in inches, weights in pounds
- All products optional in stainless steel grades, ASME code and various other construction features

* 1st set of numbers are for inlet silencers, 2nd set are for discharge silencer.
If 2nd set shows two numbers, 1st number is inlet silencer, 2nd number is discharge.