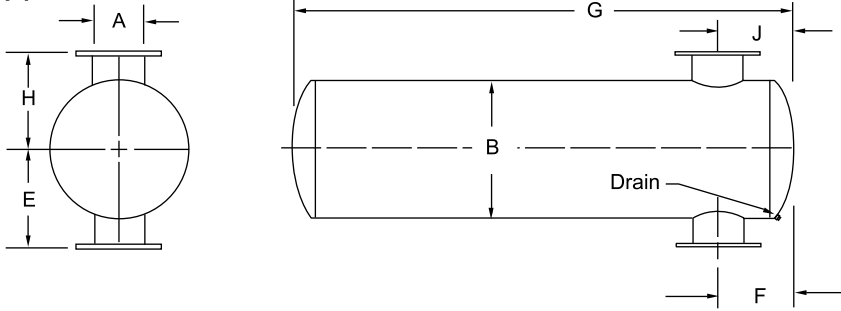


Inlet and Discharge Silencers

Multi-Chamber/Packed Silencer KH4 Series

KH4

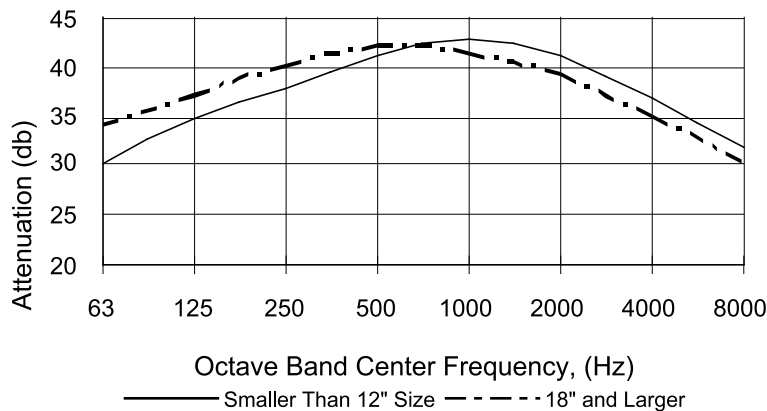


A	B	G	E	H	F inlet (min/max)	J outlet (min/max)	WT
3	12	40	9	9	5/8	5/8	75
4	14	54	10	10	6/11	6/11	140
5	16	67	11	11	7/12	7/12	215
6	18	68	12	12	8/15	8/15	310
8	26	106	16.50	16.50	10/17	10/17	660
10	30	131	18.50	18.50	12/19	12/19	955
12	36	133	21.50	21.50	14/22	14/22	1310
14	36	163	21.50	21.50	16/25	16/25	1720
16	42	176	24.50	24.50	18/26	18/26	2170
18	48	184	27.50	27.50	20/27	20/27	2730
20	48	208	28.50	28.50	22/29	22/29	3125
22	54	225	31.50	31.50	24/30	24/30	4020
24	60	268	34.50	34.50	26/31	26/31	4825

- 3 inch to 5 inch connection sizes are standard with MNPT, 6 inch and up are 150 # ANSI drilled plate flanges
- 4 inch and 5 inch are optional with MNPT or plate flanges
- Dimensions are in inches, weights in pounds
- All products optional in stainless steel grades, ASME code and various other construction features
- Nozzle elevations or orientations can be modified, please contact BelMar to discuss your preferences

Performance Data KH Series

Representative Attenuation Curve



Pressure Drop vs. Exit Velocity

