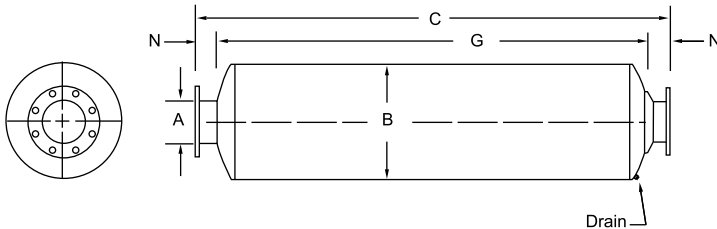


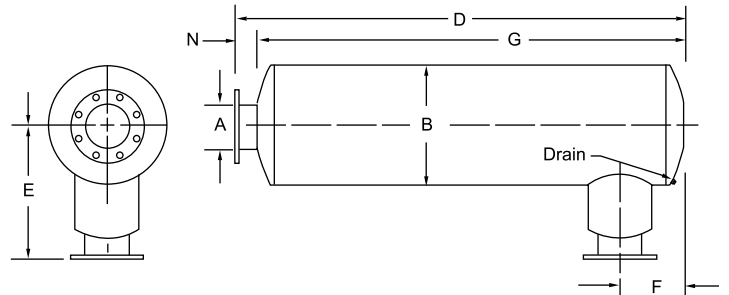
Inlet and Discharge Silencers

Multi-Chamber/Packed Silencer KH1 & KH2 Series

KH1



KH2



The BelMar KH series is a three chamber absorptive/reactive (with acoustical/packing) silencer designed for positive displacement blowers. This series is used in critical areas where noise levels must remain low and blower conditions are above transition speeds (refer to bulletin# BMBB-T1, Table A). Pulsation control is an inherent feature due to the products acoustic design requirements and therefore, if sized properly, provides optimum pressure drop and flow velocity. See Table D for typical capacity and velocity references. Performance data and an additional configuration are shown on the KH4 catalog page.

This series includes an industry premium grade polyester acoustic pack material and barrier screen that is suitable for temperatures up to 325 °F. The silencer connection with the acoustic spool should always be connected as close as possible to the blower connection.

The standard carbon steel construction includes a rigid and robust double wrap wall along the entire length of the silencer body. This feature provides an optimum amount of reduction of shell radiated noise, an increased ability to withstand blower pulsation and an economical way to aid with efforts to design against common shipping and handling damages.

A	B	C	G	N	E	F	D	WT
		KH1			KH2	KH2 (min/max)	KH2	
3	12	46	40	3	13.50	7/11	43	75
4	14	60	54	3	14.50	8/16	57.50	140
5	16	73	67	3	16.50	9/21	70.50	215
6	18	74	68	3	20.50	10/21	71.50	310
8	26	113	106	3.50	26.50	13/36	110	660
10	30	138	131	3.50	30.50	15/46	135	955
12	36	140	133	3.50	38	17/46	137	1310
14	36	170	163	3.50	40.50	18/57	167	1720
16	42	183	176	3.50	44.50	20/62	180	2170
18	48	191	184	3.50	47	22/63	188	2730
20	48	217	208	4.50	53.50	23/73	213	3125
22	54	234	225	4.50	59.50	25/80	230	4020
24	60	271	268	4.50	69	27/96	267	4825

- 2 inch to 5 inch connection sizes are standard with MNPT, 6 inch and up are 150 # ANSI drilled plate flanges
- 4 inch and 5 inch are optional with MNPT or plate flanges
- Dimensions are in inches, weights in pounds
- All products optional in stainless steel grades, ASME code and various other construction features