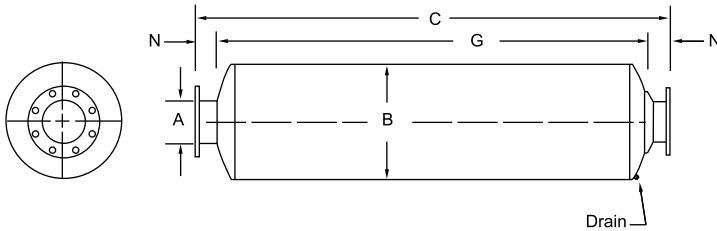


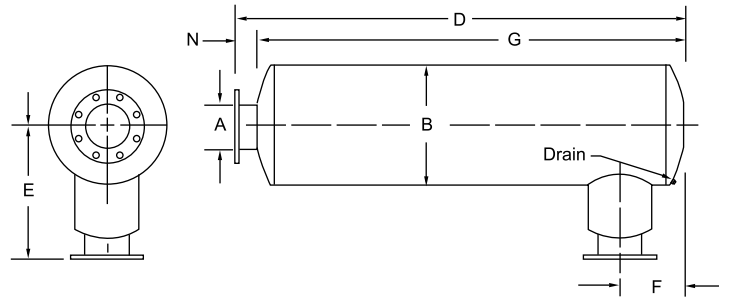
## Inlet and Discharge Silencers

### Chamber/Packed Silencer KC1 & KC2 Series

KC1



KC2



The BelMar KC series is a two chamber reactive/absorptive (with acoustical packing) silencer designed for positive displacement blowers. This series provides a premium grade of silencing when used on applications operating at above transition speed (refer to bulletin# BMBB-T1, Table A). Pulsation control is an inherent feature due to the products acoustic design requirements and therefore, if sized properly, provides optimum pressure drop and flow velocity. See Table D for typical capacity and velocity references. Performance data and an additional configuration are shown on the KC4 catalog page.

This series includes an industry premium grade polyester acoustic pack material and barrier screen that is suitable for temperatures up to 325°F. The silencer connection with the acoustic spool should always be connected as close as possible to the blower connection.

The standard carbon steel construction includes a rigid and robust double wrap wall along the entire length of the silencer body. This feature provides an optimum amount of reduction of shell radiated noise, an increased ability to withstand blower pulsation and an economical way to aid with efforts to design against common shipping and handling damages.

A	B	C KC1	G	N	E KC2	F KC2 (min/max)	D KC2	WT
2	8	33	24	3	9	6.6	30	25
2.5	10	34	24	3.50	10	7.7	31	37
3	10	46	36	3.12	10	7.7	43	50
4	14	53	42	3	14.50	8.20	50	90
5	16	65	53	3.75	16.50	9.26	62.50	150
6	18	72	60	3.25	20.50	10.30	69	210
8	22	97	84	3.38	24.50	12.45	94	420
10	26	122	107	3.50	28.50	14.60	119.50	610
12	30	135	128	3.50	35	15.66	131.50	915
14	36	161	154	3.50	40.50	17.78	157.50	1410
16	42	181	174	3.50	44.50	19.89	177.50	1815
18	48	188	181	3.50	47	21.95	184.50	2570
20	48	202	193	4.50	53.50	22.100	197.50	2765
22	54	204	195	4.50	59.50	24.100	199.50	2985
24	54	239	230	4.50	66	25.123	234.50	3830

- 2 inch to 5 inch connection sizes are standard with MNPT, 6 inch and up are 150 # ANSI drilled plate flanges
- 4 inch and 5 inch are optional with MNPT or plate flanges
- Dimensions are in inches, weights in pounds
- All products optional in stainless steel grades, ASME code and various other construction features