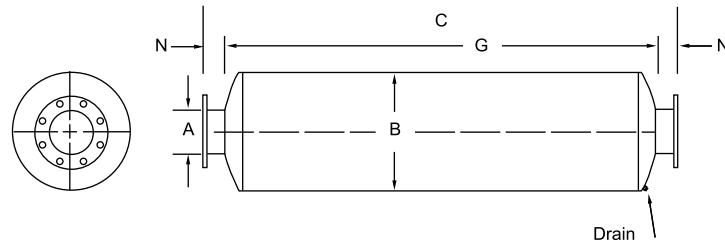


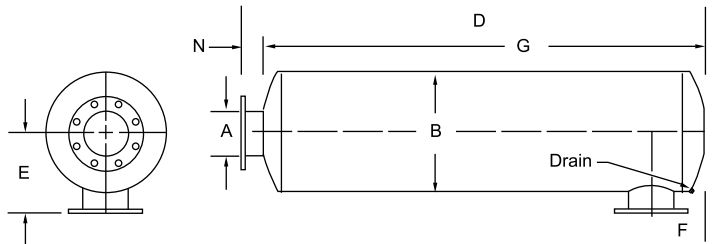
Inlet and Discharge Silencers

Multi-Chamber/Non-Packed Silencer JH1 & JH2 Series

JH1



JH2



The BelMar JH series is a three chamber reactive (no packing) silencer designed for positive displacement blowers. This series is used in critical areas where noise levels must remain low and blower conditions are below transition speeds (refer to bulletin# BMBB-T1, Table A). Pulsation control is an inherent feature due to the products acoustic design requirements and therefore, if sized properly, provides optimum pressure drop and flow velocity. See Table D for typical capacity and velocity references. Performance data and an additional configuration are shown on the JH4 catalog page.

The standard carbon steel construction includes a rigid and robust double wrap wall along the entire length of the silencer body. This feature provides an optimum amount of reduction of shell radiated noise, an increased ability to withstand blower pulsation and an economical way to aid with efforts to design against common shipping and handling damages.

The silencer connection that includes an internally perforated nozzle extension should always be connected as close as possible to the blower connection.

A	B	C JH1	G	N	E JH2	F JH2 (min/max)	D JH2	WT
2	12	40	34	3	9	4/13	37	60
2.5	12	40	34	3	9	4/13	37	60
3	12	46	40	3	9	5/15	43	65
4	14	59	53	3	10	6/20	56	140
5	14	71	65	3	10	7/25	68	190
6	18	72	66	3	12	8/25	69	230
8	26	111	104	3.50	16.50	10/41	108	580
10	30	136	129	3.50	18.50	12/51	133	875
12	36	138	131	3.50	21.20	14/50	135	1270
14	36	168	161	3.50	21.50	16/63	165	1580
16	42	181	174	3.50	24.50	18/51	178	1930
18	48	188	181	3.50	27.50	20/48	185	2680
20	48	214	205	4.50	28.50	22/56	210	3060

- 2 inch to 5 inch connection sizes are standard with MNPT, 6 inch and up are 150 # ANSI drilled plate flanges
- 4 inch and 5 inch are optional with MNPT or plate flanges
- Dimensions are in inches, weights in pounds
- All products optional in stainless steel grades, ASME code and various other construction features
- Nozzle elevations or orientations can be modified, please contact BelMar to discuss your preferences