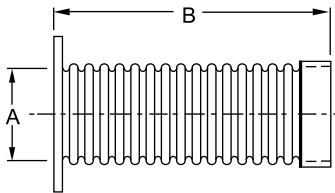
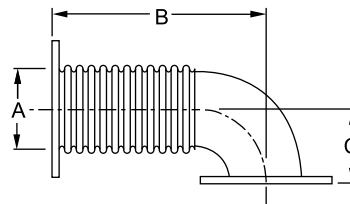


### Flange to Female NPT



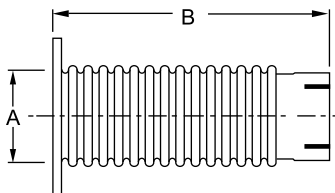
Model	A	B
XB4-02-0001	2	18
XB4-25-0001	2.5	18
XB4-03-0001	3	18
XB4-35-0001	3.5	18
XB4-04-0001	4	18
XB4-05-0001	5	18
XB4-06-0001	6	18

### Flange to Flanged 90° Elbow



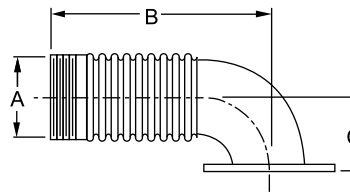
Model	A	B	C
XC1-04-0001	2	18	8
XC1-05-0001	2.5	18	10
XC1-06-0001	3	18	10
XC1-08-0001	3.5	18	8

### Flange to Slotted Cuff



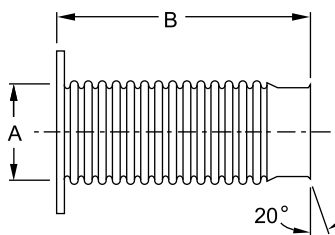
Model	A	B
XB5-02-0001	2	18
XB5-25-0001	2.5	18
XB5-03-0001	3	18
XB5-35-0001	3.5	18
XB5-04-0001	4	18
XB5-05-0001	5	18
XB5-06-0001	6	18

### Male NPT to Flanged 90° Elbow



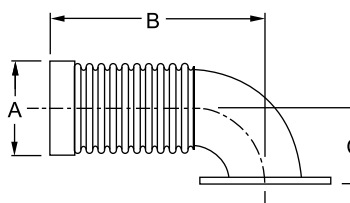
Model	A	B	C
XC2-04-0001	4	18	8
XC2-05-0001	5	18	10
XC2-06-0001	6	18	10

### Flange to 20° Lip Flange



Model	A	B
XB6-04-0001	4	18
XB6-05-0001	5	18
XB6-06-0001	6	18

### Female NPT to Flanged 90° Elbow



Model	A	B	C
XC3-04-0001	4	18	8
XC3-05-0001	5	18	10
XC3-06-0001	6	18	10

- 321 stainless steel flex hose
- Carbon steel connectors
- Other connections and larger sizes available upon request

**Customize your exhaust system to meet your application needs!**

We will work with you to design the silencer and exhaust components that will save product cost and installation time.

**BelMar Industries**

Ph: 952-486-8588

Fax: 952-486-8289

[www.belmar-ind.com](http://www.belmar-ind.com)