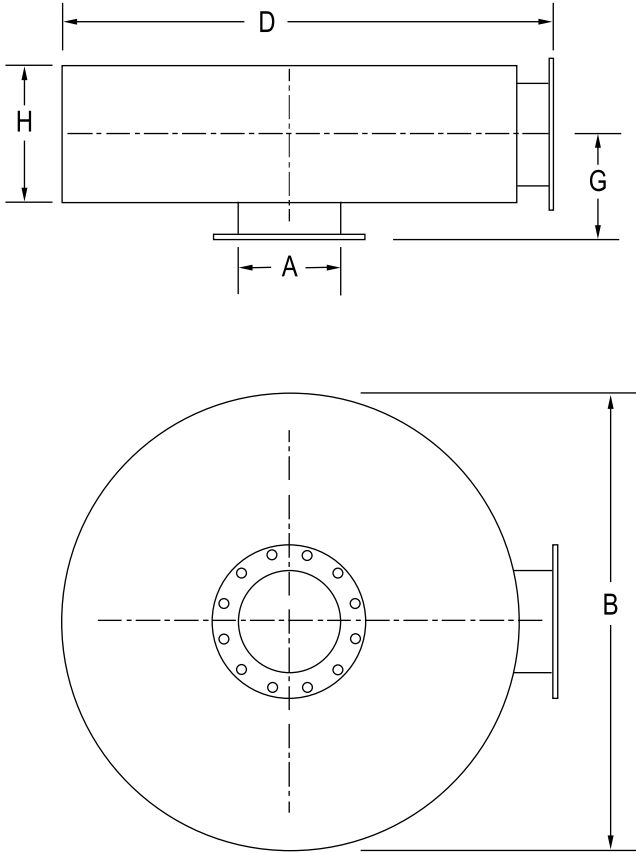


Critical Grade DC2 Series



Applications

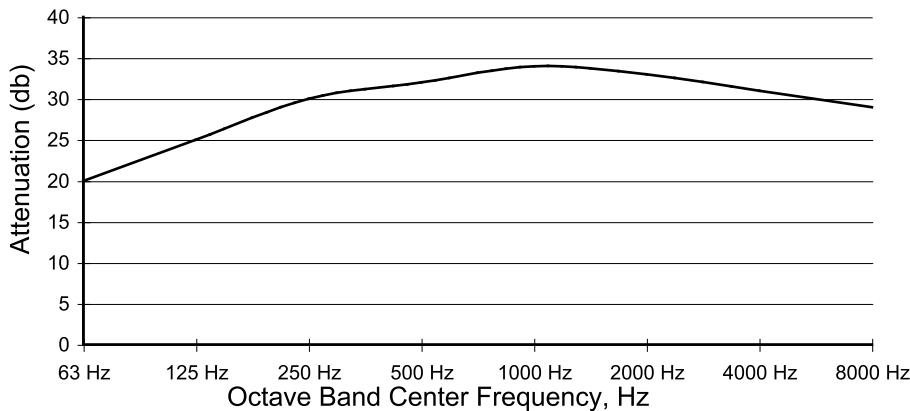
- The DC2 series is a low profile silencer intended for use where ambient noise levels are low and a high degree of silencing is required
- A wide range of brackets are available to meet your installation needs
- Average noise level reductions: 24-34 dBA

Construction

- A combination of absorptive and reactive chambers
- Carbon steel construction is standard however other materials such as stainless steel and aluminized steel are available
- Painted with high temperature black paint
- Dual inlets as well as other inlet and outlet configurations are available
- Standard connections are ANSI flanges
- Fiberglass packed shell:
 - Reduces airborne and shell radiated noise
 - Reduces outer surface temperatures
- Smaller and larger sizes are available upon request

Model	A	B	D	G	H	WT
DC2-04-0001	4	24	28	8	9	110
DC2-05-0001	5	30	34	8.5	10	180
DC2-06-0001	6	36	40	9	11	280
DC2-08-0001	8	42	46	10.25	13	390
DC2-10-0001	10	48	52	11.25	15	560
DC2-12-0001	12	60	64	12.25	17	750
DC2-14-0001	14	66	70	14	20	950
DC2-16-0001	16	72	76	15	22	1200
DC2-18-0001	18	84	88	16	24	1500

Representative Attenuation Curve, DC2 Series



Customize your exhaust system to meet your application needs!

We will work with you to design the silencer and exhaust components that will save product cost and installation time.

BMED-100 (10/08)

BelMar Industries

Ph: 952-486-8588

Fax: 952-486-8289

www.belmar-ind.com